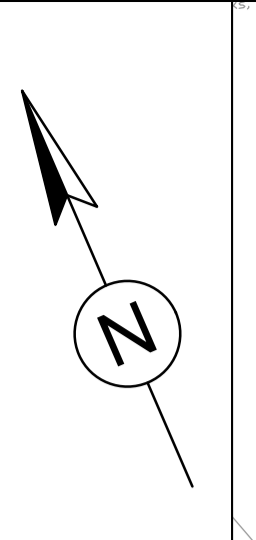


DO NOT SCALE

Millimetres

0 10



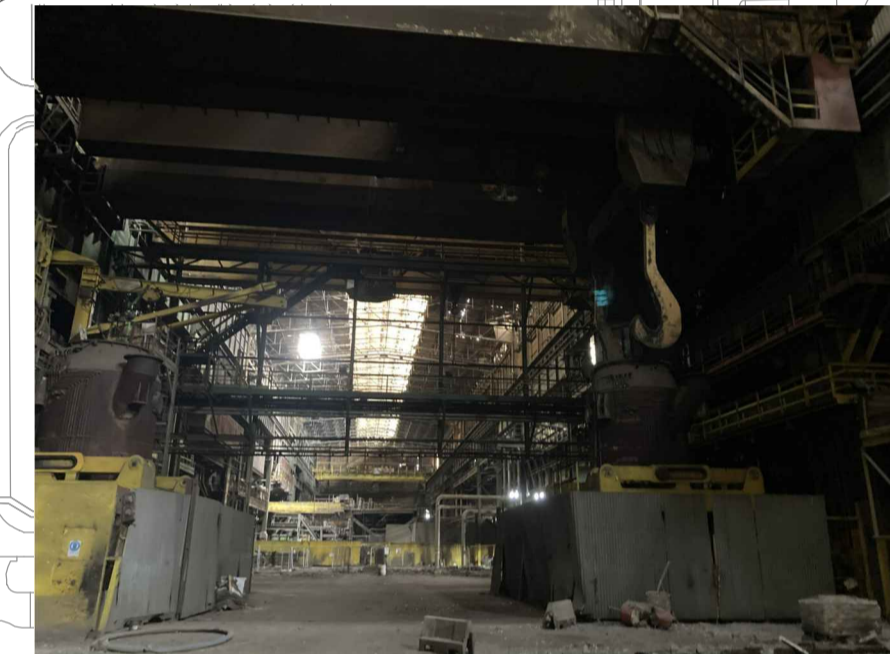
EXPORT BAY



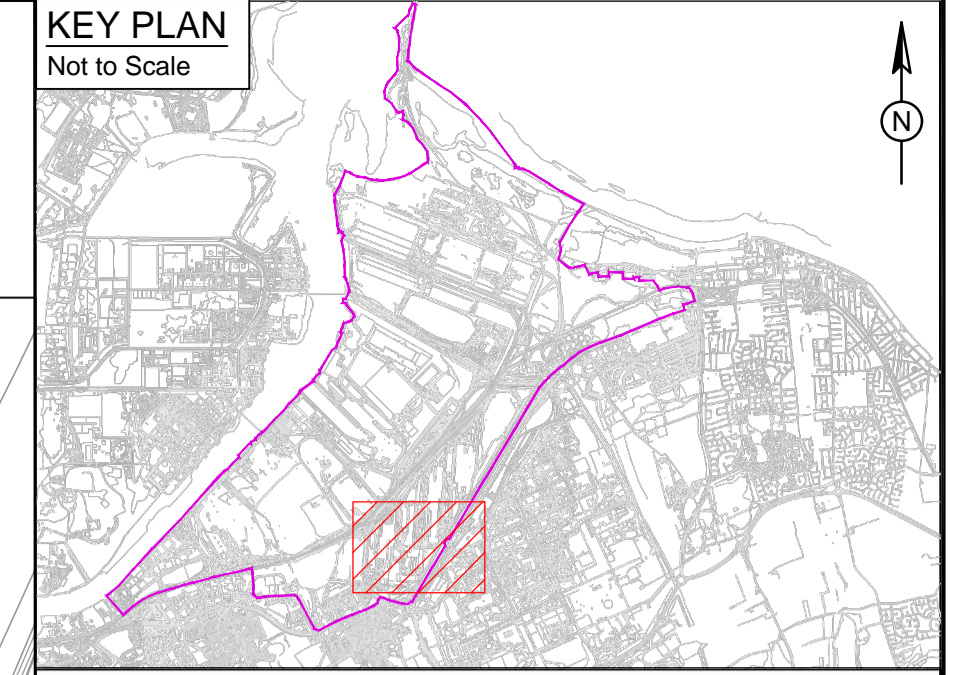
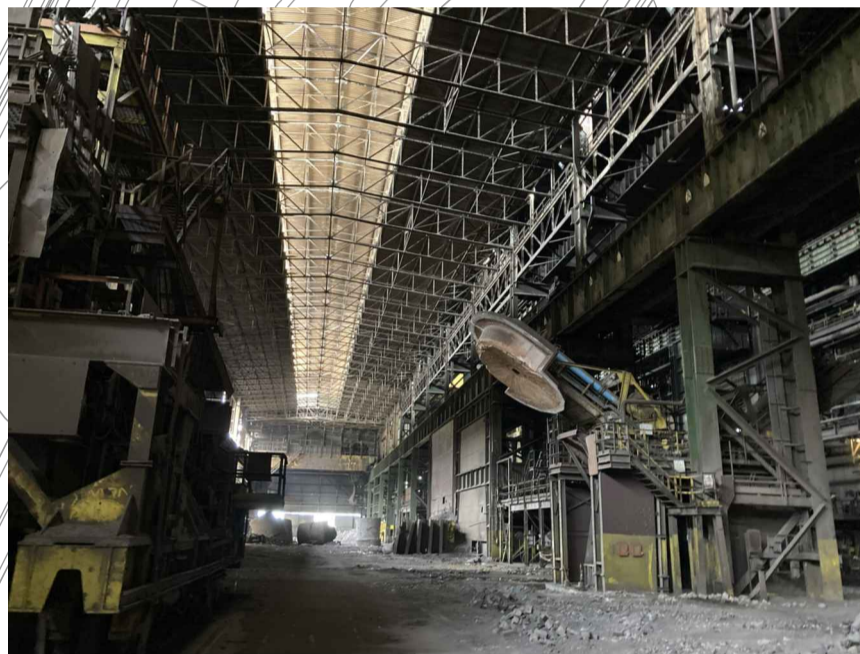
OXYGEN AND NITROGEN COMPOUND



SAND FILTERS AND PUMPHOUSE



INTERNALS AND EXTERNALS



KEY PLAN
Not to Scale

NOTE:
1. ALL BUILDINGS, STRUCTURES AND ASSOCIATED PLANT TO BE DEMOLISHED WITHIN EACH AREA SHOWN.

NOTES:
1. DO NOT SCALE FROM THIS DRAWING.
2. RESIDUAL ANCILLARY STRUCTURES OUTSIDE OF FORMER WORKS AREAS HAVE BEEN OMITTED FOR CLARITY.

- STDC BOUNDARY
- PROJECT SITE BOUNDARY
- BOS & CONCAST EAST PLANT PHASE 1
- BOS & CONCAST EAST PLANT PHASE 2
- BOS & CONCAST WEST PLANT PHASE 1
- BOS & CONCAST WEST PLANT PHASE 2
- BOS & CONCAST WEST PLANT PHASE 3
- BOS & CONCAST MAIN PLANT PHASE 4
- INDICATIVE SITE LOCATION

SAFETY, HEALTH AND ENVIRONMENTAL INFORMATION

In addition to the hazards/risks normally associated with the types of work detailed on this drawing, note the following:

CONSTRUCTION

N/A

MAINTENANCE/CLEANING

N/A

DECOMMISSIONING/DEMOLITION

It is assumed that all works will be carried out by a competent contractor working, where appropriate, to an approved method statement

Rev.	Date:	Description:	By	Chkd	App'd
P01	X/XX/2020	PRELIMINARY ISSUE	BGV	CP	TJM

ATKINS
 Nova North
 11 Bressenden Place
 London
 SW1E 5BY
 Tel: +44 (0)1372 726140
 Fax: +44 (0)1372 740055
 www.atkinsglobal.com

STDC
 Teeside Management Offices,
 Redcar, TS10 5QW
 www.southteesdc.com

South Tees Development Corporation

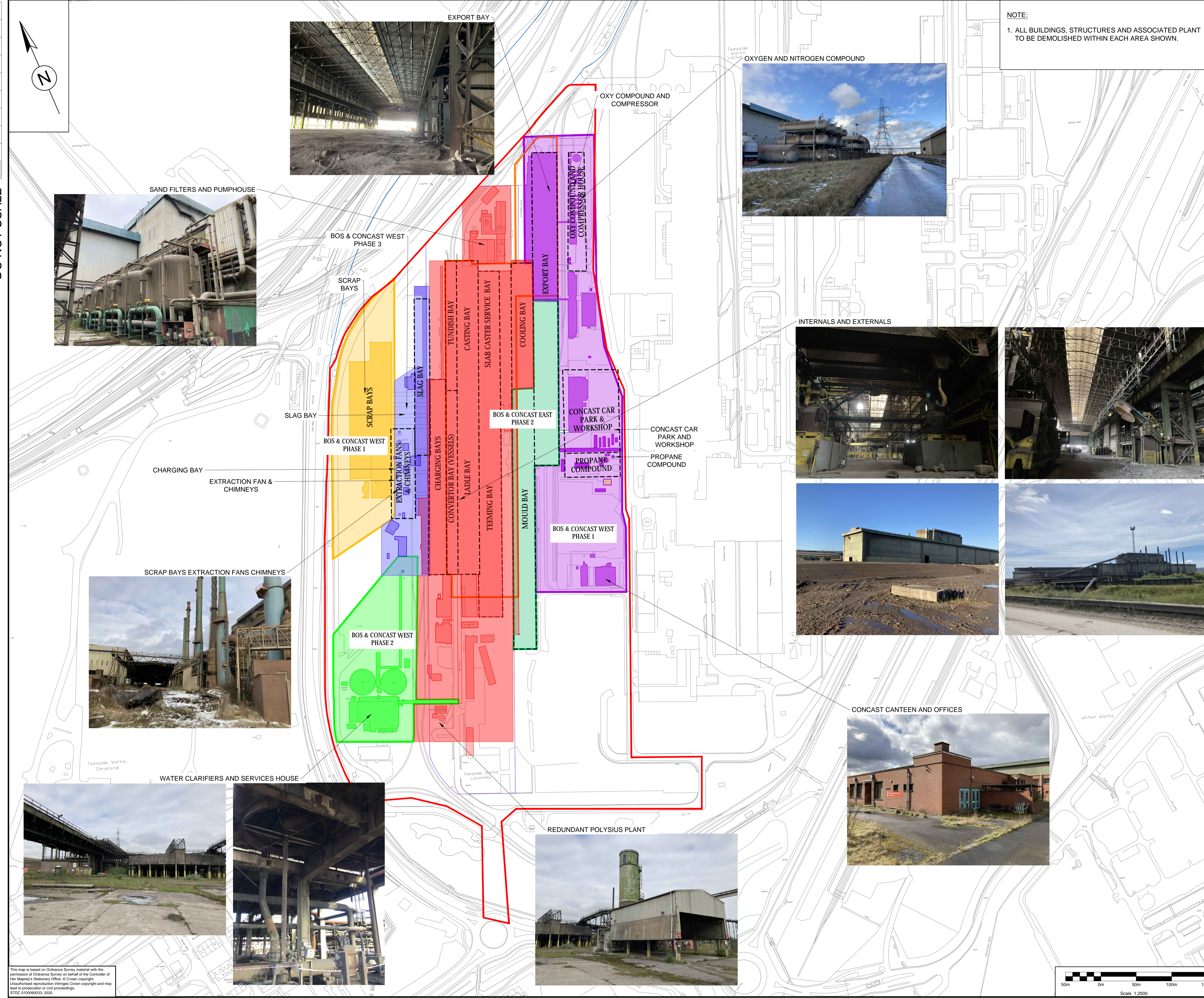
Project Title:
**DEMOLITION CONTRACTORS FRAMEWORK
SOUTH TEES DEVELOPMENT CORPORATION**

Drawing Name:
**LACKENBY ENABLING WORKS
BOS & CONCAST EAST PHASE 1, 2 &
BOS & CONCAST WEST PHASE 1, 2, 3 & 4
PRIOR APPROVAL DEMOLITIONS**

Drawn by: CK Date: 18/01/2021
Checked by: CP Date: 18/01/2021
Approved by: TJM Date: 18/01/2021

Drawing Number: **STDC-ATK-NZT-ZZ-DR-S-0002** Revision: **P01**

Drawing Scale: **1:2500** Suitability Code: **S3** Page Size: **A1**



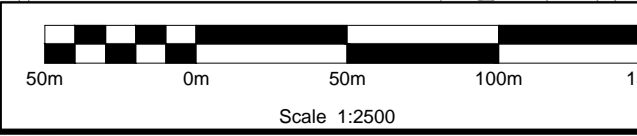
WATER CLARIFIERS AND SERVICES HOUSE



REDUNDANT POLYSIUS PLANT



CONCAST CANTEEN AND OFFICES



This map is based on Ordnance Survey material with the permission of Ordnance Survey on behalf of the Controller of Her Majesty's Stationary Office. © Crown copyright. Unauthorised reproduction infringes Crown copyright and may lead to prosecution or civil proceedings. STDC 010006003, 2020.